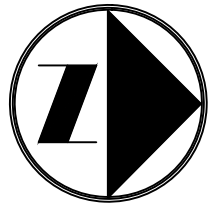
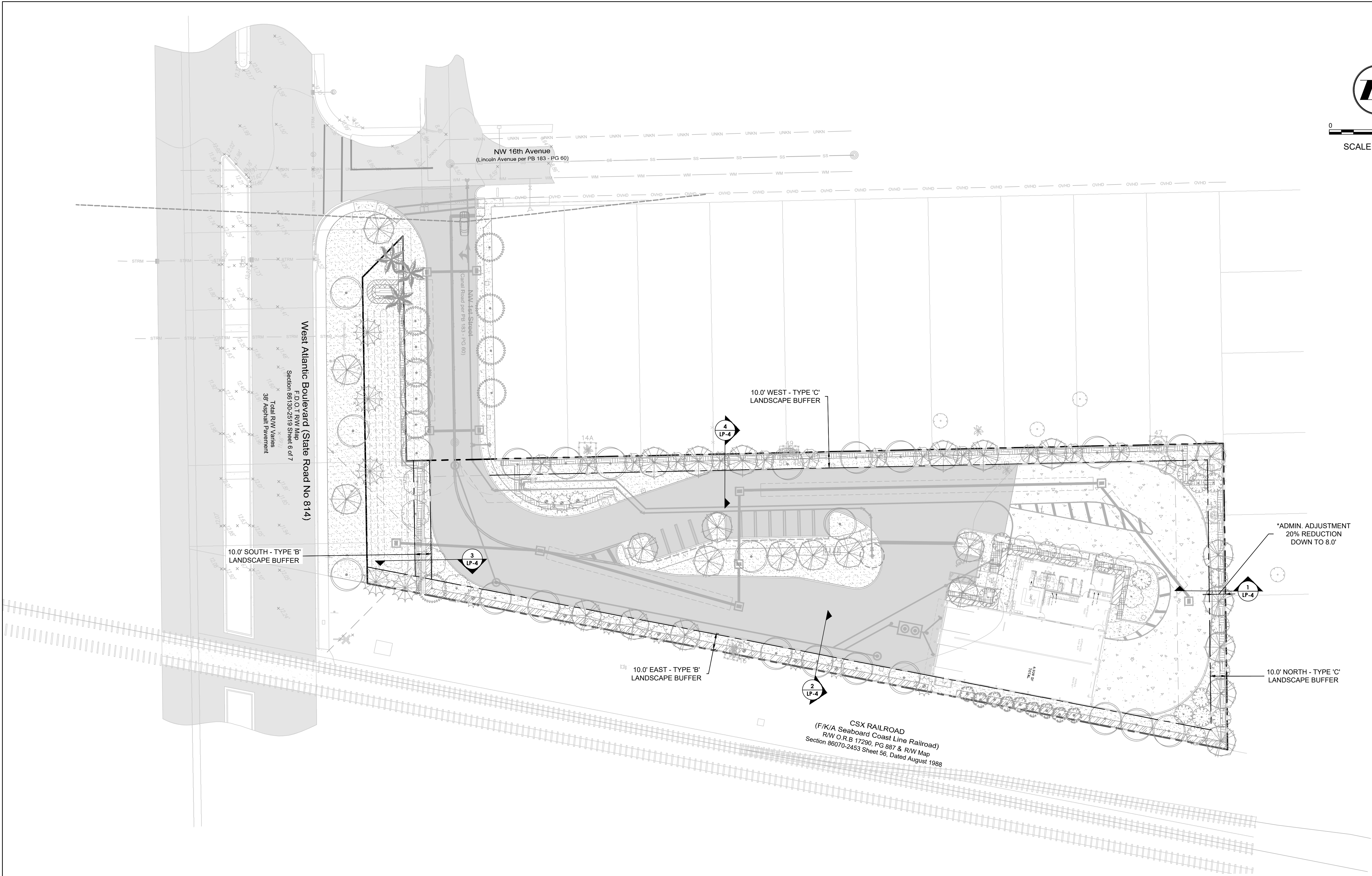


DRC

PZ24-12000026  
08.20.2025



SCALE: 1" = 30'



**CRAVEN - THOMPSON AND ASSOCIATES, INC.**  
ENGINEERS • PLANNERS • SURVEYORS  
35653 N.W. 53RD STREET, FORT LAUDERDALE, FLORIDA 33309  
TEL: (954) 739-6409  
FAX: (954) 739-6400  
FLORIDA LICENSED PROFESSIONAL ENGINEERS, SURVEYORS & MAPPING BUSINESS NO. 4771  
FLORIDA LICENSED LANDSCAPE ARCHITECTURE BUSINESS NO. C000114  
MATERIAL SHOWN HEREIN IS THE PROPERTY OF CRAVEN, THOMPSON & ASSOCIATES, INC. AND SHALL NOT BE REPRODUCED OR IN PART WITHOUT WRITTEN PERMISSION OF CRAVEN-THOMPSON & ASSOCIATES, INC. COPYRIGHT © 2019

**ATLANTIC FLEET WASH**  
**1501 WEST ATLANTIC BLVD.**  
**POMPANO BEACH, FLORIDA**  
**KAJA PROPERTIES INC.**  
**LANDSCAPE BUFFER SECTION LAYOUT**

Nicole D. Pastre  
Florida R.L.A. No. 6667397  
2025-07-08  
PROJECT NO.  
24-0055-001-01  
LP-3  
SHEET \_\_\_\_ OF \_\_\_\_